

Wiper Motor

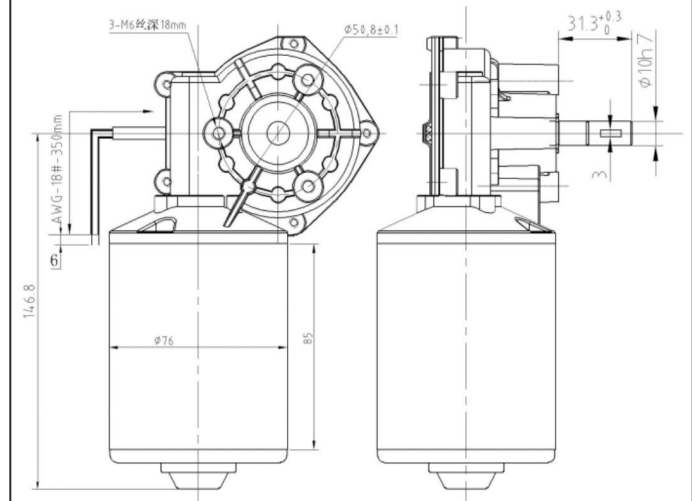
GUANGZHOU HAOQING MOTOR CO.,LTD

1.1- JC76L电机产品系列: JCF76L motor series

产品代表图:JCF76L



产品外形图:JCF76L



电机选型参数:Motor characteristic

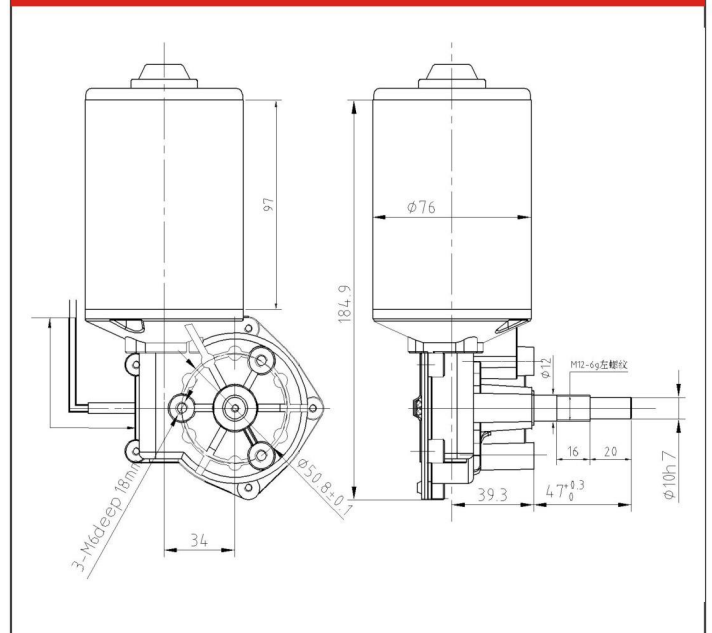
产品型号 Products Type	额定电压 Voltage	额定功率 Power	空载No Load		负载Load			减速比 Gear ratio	钢壳长度 Motor length
			转速 Speed	电流 Current	转速 Speed	电流 Current	力矩 Torque		
	VDC	W	RPM	A	RPM	A	N. M	mm	
JCF76L-2445-180	24	45	180 ± 5	≤ 1.2	150 ± 5	≤ 4.5	≥ 4.5	1:20	77
JCF76L-2445-210	24	45	210 ± 5	≤ 1.5	180 ± 5	≤ 6.5	≥ 6.0	1:20	77
JCF76L-2465-180	24	65	180 ± 5	≤ 1.2	150 ± 5	≤ 4.5	≥ 4.5	1:20	85
JCF76L-22065-180	220	65	180 ± 5	≤ 0.2	150 ± 5	≤ 0.5	≥ 4.5	1:20	85
JCF76L-2465-180	24	65	180 ± 5	≤ 1.2	150 ± 5	≤ 4.5	≥ 4.5	1:20	85
JCF76L-2465-210	24	65	210 ± 5	≤ 1.5	180 ± 5	≤ 6.5	≥ 6.0	1:20	85
JCF76L-2495-150	24	95	150 ± 5	≤ 1.0	130 ± 5	≤ 3.5	≥ 3.3	1:20	97
JCF76L-2445-15	24	45	15 ± 2	≤ 0.5	12 ± 2	≤ 2.0	≥ 4.5	1:75	97
JCF76L-24120-50	24	120	50 ± 5	≤ 1.2	40 ± 5	≤ 4.5	≥ 8	1:60	85
JCF76L-220-210	220	120	50 ± 5	≤ 0.2	40 ± 5	≤ 0.5	≥ 8	1:60	85
JCF76L-24150-60	24	150	60 ± 5	≤ 1.5	48 ± 5	≤ 6	≥ 12	1:60	97
JCF76L-12120-50	12	120	50 ± 5	≤ 1.5	38 ± 5	≤ 8	≥ 8.0	1:60	97
JCF76L-220200-60	220	200	60 ± 5	≤ 0.2	48 ± 5	≤ 0.8	≥ 15	1:60	97
JCF76L-220260-70	220	260	70 ± 7	≤ 0.3	58 ± 5	≤ 1.0	≥ 20	1:60	108
备注: Remarks	以上为我公司生产的常规电机型号参数, 另可根据客户提供的电压、功率、转速、力矩、电机安装尺寸、轴伸尺寸等参数进行设计制作。Above are our model parameter for the wire feed for your reference, and we can design and make following to your voltage, power, speed, torque, install dimension and shaft outspeed dimension etc.								

1.2-JC76R电机产品系列: JCF76R motor series

产品代表图:JC76R



产品外形图:JC76R



电机选型参数:Motor characteristic

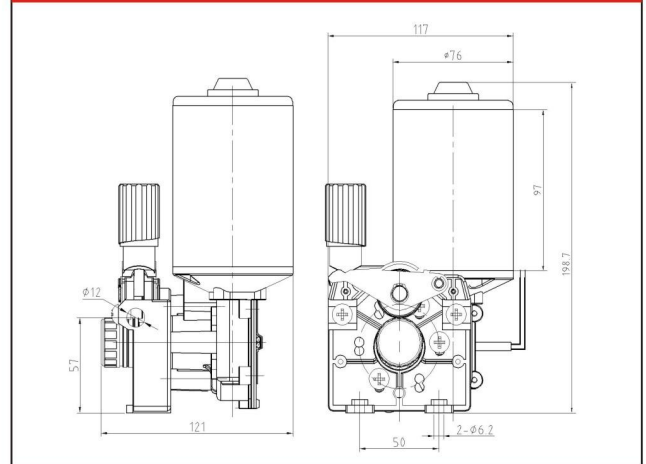
产品型号 Products Type	额定电压 Voltage	额定功率 Power	空载No Load		负载Load			减速比 Gear ratio	钢壳长度 Motor length
			转速 Speed	电流 Current	转速 Speed	电流 Current	力矩 Torque		
	VDC	W	RPM	A	RPM	A	N. M	mm	
JCF76R-2445-180	24	45	180 ± 5	≤ 1.2	150 ± 5	≤ 4.5	≥ 4.5	1:20	77
JCF76R-2445-210	24	45	210 ± 5	≤ 1.5	180 ± 5	≤ 6.5	≥ 6.0	1:20	77
JCF76R-2465-180	24	65	180 ± 5	≤ 1.2	150 ± 5	≤ 4.5	≥ 4.5	1:20	85
JCF76R-22065-180	220	65	180 ± 5	≤ 0.2	150 ± 5	≤ 0.5	≥ 4.5	1:20	85
JCF76R-2465-180	24	65	180 ± 5	≤ 1.2	150 ± 5	≤ 4.5	≥ 4.5	1:20	85
JCF76R-2465-210	24	65	210 ± 5	≤ 1.5	180 ± 5	≤ 6.5	≥ 6.0	1:20	85
JCF76R-2495-150	24	95	150 ± 5	≤ 1.0	130 ± 5	≤ 3.5	≥ 3.3	1:20	97
JCF76R-2495-180	24	95	180 ± 5	≤ 1.2	150 ± 5	≤ 4.5	≥ 4.5	1:20	97
JCF76R-24120-50	24	120	50 ± 5	≤ 1.2	40 ± 5	≤ 4.5	≥ 8	1:60	85
JCF76R-220-210	220	120	50 ± 5	≤ 0.2	40 ± 5	≤ 0.5	≥ 8	1:60	85
JCF76R-24150-60	24	150	60 ± 5	≤ 1.5	48 ± 5	≤ 6	≥ 12	1:60	97
JCF76R-12120-50	12	120	50 ± 5	≤ 1.5	38 ± 5	≤ 8	≥ 8.0	1:75	97
JCF76R-220200-60	220	200	60 ± 5	≤ 0.2	48 ± 5	≤ 0.8	≥ 15	1:60	97
JCF76R-220260-70	220	260	70 ± 7	≤ 0.3	58 ± 5	≤ 1.0	≥ 20	1:60	108
备注: Remarks	以上为我公司生产的常规电机型号参数, 另可根据客户提供的电压、功率、转速、力矩、电机安装尺寸、轴伸尺寸等参数进行设计制作。Above are our model parameter for the wire feed for your reference, and we can design and make following to your voltage, power, speed, torque, install dimension and shaft outspeed dimension etc.								

1.3-JCF76L送丝机产品系列: JCF76 L motor series

产品代表图:D76-反手柄



产品外形图:D76-反手柄

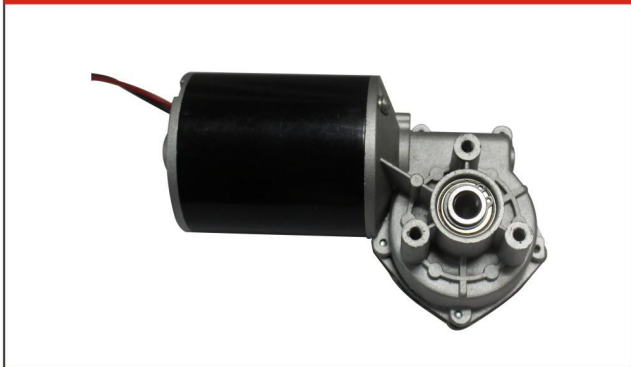


电机选型参数:Motor characteristic

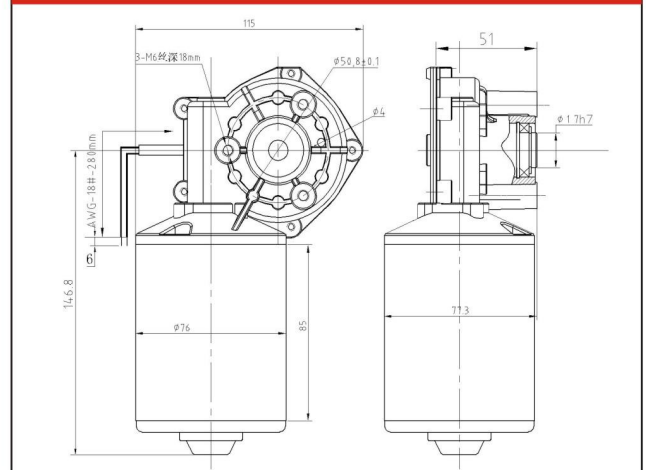
产品型号 Products Type	额定电压 Voltage VDC	额定功率 Power W	空载No Load		负载Load			减速比 Gear ratio	钢壳长度 Motor length mm
			转速 Speed RPM	电流 Current A	转速 Speed RPM	电流 Current A	力矩 Torque N. M		
JCF76L-2465-180	24	65	180 ± 5	≤ 1.2	150 ± 5	≤ 4.5	≥ 4.5	1:20	85

1.4- JCF76L-K电机产品系列: JCF76L-K motor series

产品代表图:D76空心轴-Model



产品外形图:D76空心轴-Model



电机选型参数:Motor characteristic

产品型号 Products Type	额定电压 Voltage VDC	额定功率 Power W	空载No Load		负载Load			减速比 Gear ratio	钢壳长度 Motor length mm
			转速 Speed RPM	电流 Current A	转速 Speed RPM	电流 Current A	力矩 Torque N. M		
JCF76LK-22080-50	220	80	50 ± 5	≤ 0.2	40 ± 5	≤ 0.5	≥ 8.0	1:60	85

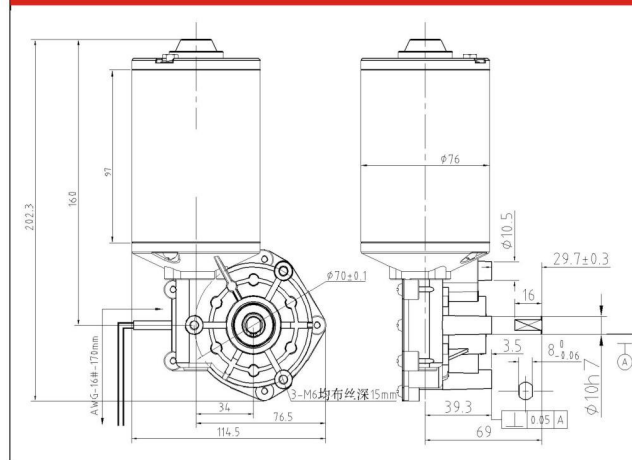
此产品适用于饲料搅拌机械, 自动养猪设备。

1.5-JCF76R-70电机产品系列: JCF76R-70 motor series

产品代表图:D76大脚



产品外形图:D76大脚



电机选型参数:Motor characteristic

产品型号 Products Type	额定电压 Voltage VDC	额定功率 Power W	空载No Load		负载Load			减速比 Gear ratio	钢壳长度 Motor length mm
			转速 Speed RPM	电流 Current A	转速 Speed RPM	电流 Current A	力矩 Torque N. M		
JCF76R-224120-48	24	120	48 ± 5	≤1.2	36 ± 3	≤5.0	≥12.0	1:75	97

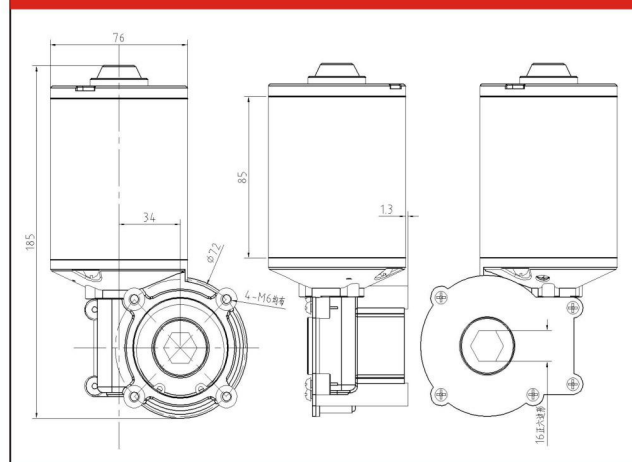
此产品适用于电动执行器, 直线执行器, 电动推杆, 机械设备等。输出轴尺寸接受定制

1.6-JCF76R-S电机产品系列: JCF76R-S motor series

产品代表图:D76四柱-Model



产品外形图:D76四柱-Model



电机选型参数:Motor characteristic

产品型号 Products Type	额定电压 Voltage VDC	额定功率 Power W	空载No Load		负载Load			减速比 Gear ratio	钢壳长度 Motor length mm
			转速 Speed RPM	电流 Current A	转速 Speed RPM	电流 Current A	力矩 Torque N. M		
JCF76RS-1280-65	12	80	65 ± 6	≤1.8	50 ± 3	≤9.0	≥6.0	1:60	85

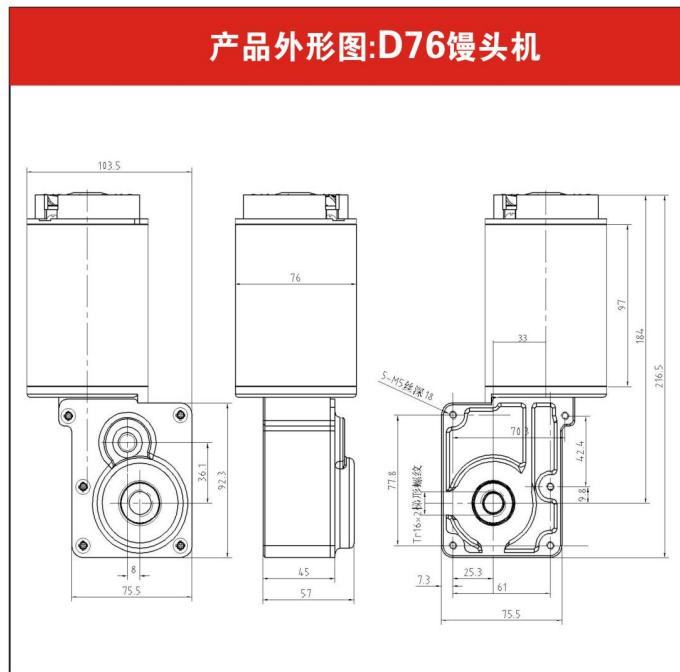
此产品适用于电动升降设备, 农业播种机, 电动车库, 汽车电动卷帆布机械等。输出轴尺寸接受定制

1.7-JCF76SS电机产品系列: JCF76SS motor series

产品代表图:D76馒头机



产品外形图:D76馒头机



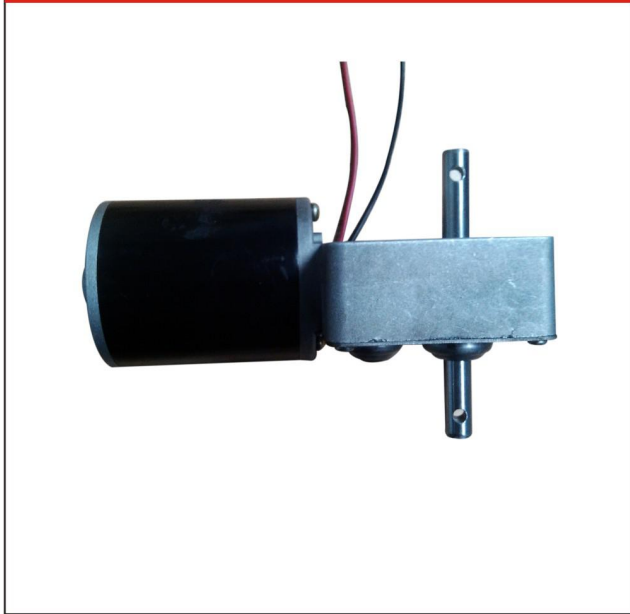
电机选型参数:Motor characteristic

产品型号 Products Type	额定电压 Voltage	额定功率 Power	空载No Load		负载Load			减速比 Gear ratio	钢壳长度 Motor length
			转速 Speed	电流 Current	转速 Speed	电流 Current	力矩 Torque		
			VDC	W	RPM	A	RPM		A
JCF76SS-28	220	180	28 ± 3	≤ 0.3	20 ± 2	≤ 0.8	≥ 20	1:106	97
JCF76SS-20	220	150	20 ± 3	≤ 0.3	17 ± 2	≤ 0.5	≥ 20	1:167	97
JCF76SS-10	220	80	10 ± 2	≤ 0.2	7 ± 1	≤ 0.3	≥ 10	1:167	97
JCF76SS-20	24	120	20 ± 3	≤ 1.4	16 ± 2	≤ 4.5	≥ 20	1:167	97

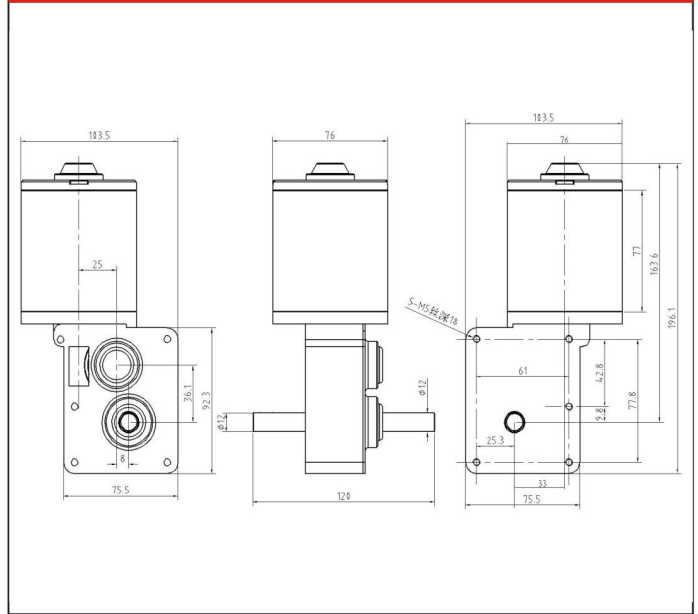
此产品适用于家用电器，如自动馒头机，面包机等，也可适用于推杆设备，特点：转速低，力矩大。输出轴尺寸接受定制。

1.8-JCF76SF电机产品系列: JCF76SF motor series

产品代表图:D76双输出-Model



产品外形图:D76双输出-Model



电机选型参数:Motor characteristic

产品型号 Products Type	额定电压 Voltage	额定功率 Power	空载No Load		负载Load			减速比 Gear ratio	钢壳长度 Motor length
			转速 Speed	电流 Current	转速 Speed	电流 Current	力矩 Torque		
	VDC	W	RPM	A	RPM	A	N. M	mm	
JCF76SF-24120-20	24	120	20 ± 3	≤ 1.4	15 ± 2	≤ 4.0	≥ 20	1:106	97
JCF76SF-2480-15	24	80	15 ± 2	≤ 1.2	12 ± 2	≤ 3.5	≥ 15	1:167	97
JCF76SF-2480-10	24	80	10 ± 1	≤ 1.0	7 ± 1	≤ 3.0	≥ 10	1:167	97
JCF76SF-1260-15	12	60	15 ± 2	≤ 1.5	12 ± 2	≤ 4.5	≥ 15	1:167	97

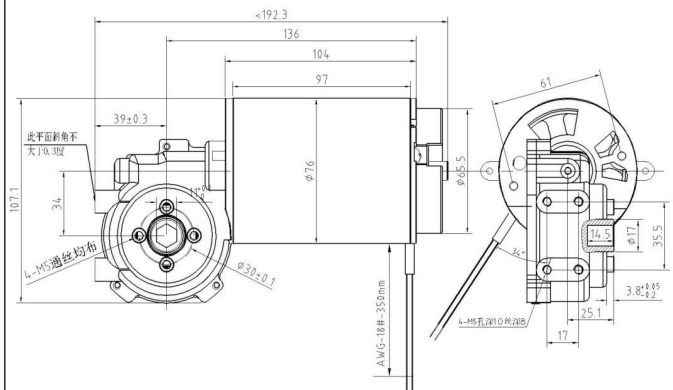
此产品适用于家用电器，如自动馒头机，面包机等，也可适用于推杆设备，特点：转速低，力矩大。输出轴尺寸接受定制。

1.9-JCF76ZY-01榨油电机产品系列: JCF76ZY01 motor series

产品代表图:D76榨油机老款-Model



产品外形图:D76榨油机老款-Model



电机选型参数:Motor characteristic

产品型号 Products Type	额定电压 Voltage	额定功率 Power	空载No Load		负载Load			减速比 Gear ratio	钢壳长度 Motor length
			转速 Speed	电流 Current	转速 Speed	电流 Current	力矩 Torque		mm
			RPM	A	RPM	A	N. M		
JCF76ZY-01-85	220	260	85 ± 8	≤ 0.2	72 ± 7	≤ 0.8	≥ 15	1:48	97
JCF76ZY-01-75	220	220	75 ± 7	≤ 0.2	65 ± 6	≤ 0.8	≥ 15	1:48	97
JCF76ZY-01-65	220	180	65 ± 6	≤ 0.2	55 ± 5	≤ 0.8	≥ 12	1:48	97
JCF76ZY-01-55	220	150	55 ± 5	≤ 0.2	42 ± 5	≤ 0.8	≥ 15	1:60	97

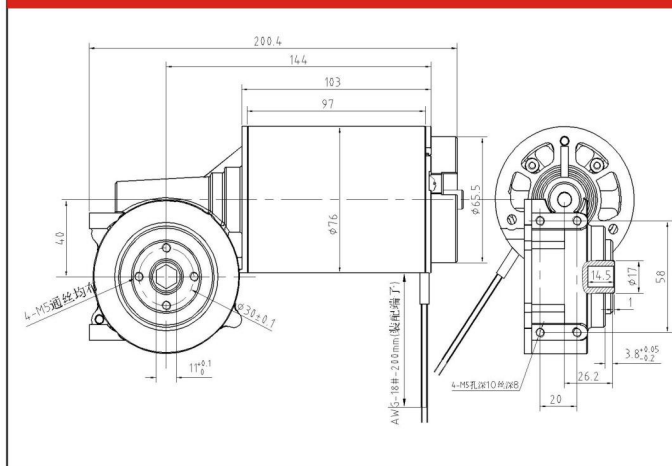
此产品适用于家用电器，如自动馒头机，面包机，榨油机等。特点：噪音小，力矩大。输出轴尺寸接受定制。

1.10-JCF76ZY-02榨油电机产品系列: JCF76ZY02 motor series

产品代表图:D76榨油机新款-Model



产品外形图:D76榨油机新款-Model



电机选型参数:Motor characteristic

产品型号 Products Type	额定电压 Voltage VDC	额定功率 Power W	空载No Load		负载Load			减速比 Gear ratio	钢壳长度 Motor length mm
			转速 Speed RPM	电流 Current A	转速 Speed RPM	电流 Current A	力矩 Torque N. M		
JCF76ZY-02-75	220	280	75 ± 7	≤0.2	65 ± 6	≤0.8	≥20	1:51	97

此产品适用于家用电器，如自动馒头机，面包机，榨油机等。特点：噪音小，力矩大。输出轴尺寸接受定制。

1.11-JCF76ZY-03榨油电机产品系列: JCF76ZY03 motor series

产品代表图:JCF76ZY03



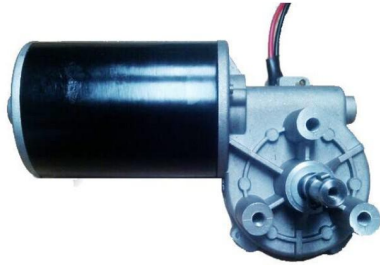
电机选型参数:Motor characteristic

产品型号 Products Type	额定电压 Voltage VDC	额定功率 Power W	空载No Load		负载Load			减速比 Gear ratio	钢壳长度 Motor length mm
			转速 Speed RPM	电流 Current A	转速 Speed RPM	电流 Current A	力矩 Torque N. M		
JCF76ZY-03-85	220	280	85 ± 8	≤0.3	85 ± 8	≤1.0	≥25	1:51	105

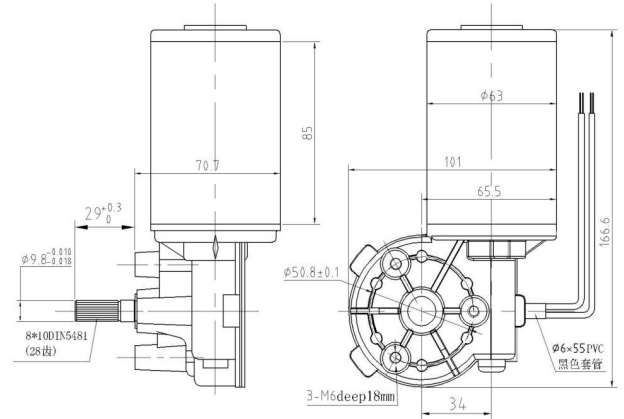
此产品适用于家用电器，如料理机，自动馒头机，面包机，榨油机等。特点：噪音小，力矩大。输出轴尺寸接受定制。

2.1-JC63L电机产品系列: JCF63L motor series

产品代表图:D63L-Model

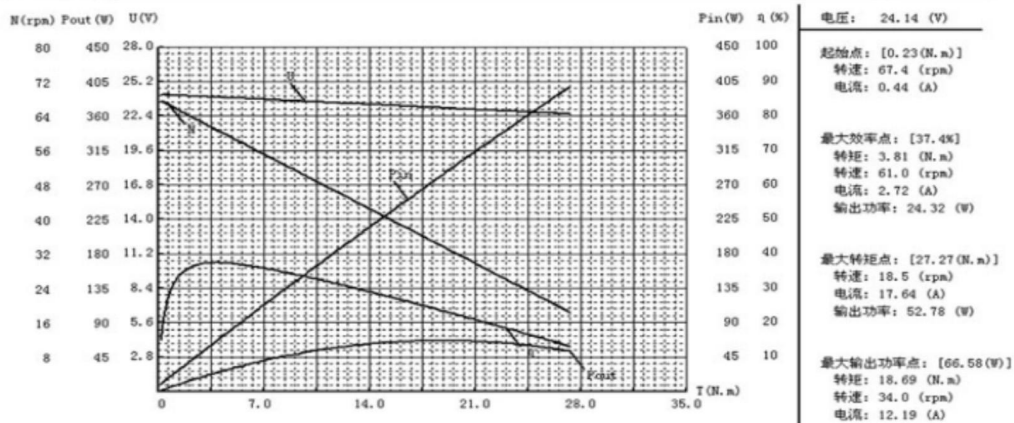


产品外形图:D63L-Model



电机曲线图

电机负载特性曲线图



电机选型参数:Motor characteristic

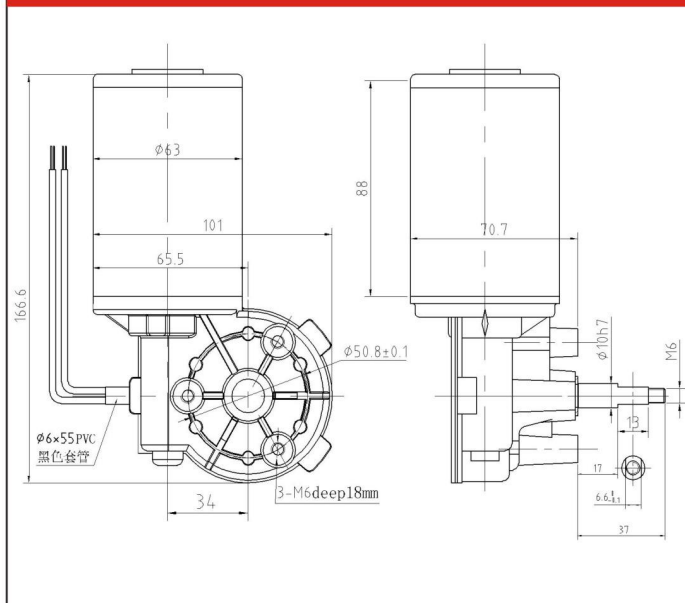
产品型号 Products Type	额定电压 Voltage	额定功率 Power	空载No Load		负载Load			减速比 Gear ratio	钢壳长度 Motor length
			转速 Speed	电流 Current	转速 Speed	电流 Current	力矩 Torque		
			VDC	W	RPM	A	RPM		
JCF63L-2445-180	24	45	180 ± 5	≤1.2	150 ± 5	≤4.0	≥3.5	1:20	85
JCF63L-22080-30	220	80	30 ± 3	≤0.2	25 ± 2	≤0.5	≥7.0	1:60	85
JCF63L-2480-50	24	80	50 ± 5	≤1.2	45 ± 5	≤4.5	≥6.0	1:60	85
JCF63L-2480-100	24	80	100	≤1.8	80 ± 5	≤7.5	≥8	1:60	85
JCF63L-1260-60	12	60	60 ± 5	≤1.5	50 ± 5	≤6.0	≥8	1:60	85
JCF63L-3680-40	36	80	40 ± 5	≤1.0	32 ± 3	≤4	≥6	1:60	85
备注: Remarks	以上为我公司生产的常规电机型号参数, 另可根据客户提供的电压、功率、转速、力矩、电机安装尺寸、轴伸尺寸等参数进行设计制作。Above are our model parameter for the wire feed for your reference, and we can design and make following to your voltage, power, speed, torque, install dimension and shaft outspeed dimension etc.								

2.2-JC63R电机产品系列: JCF63R motor series

产品代表图:D63R-Model



产品外形图:D63R-Model

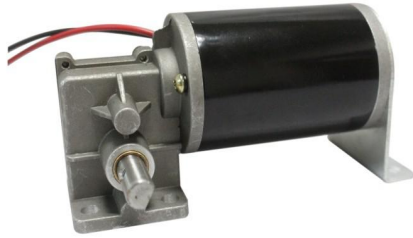


电机选型参数:Motor characteristic

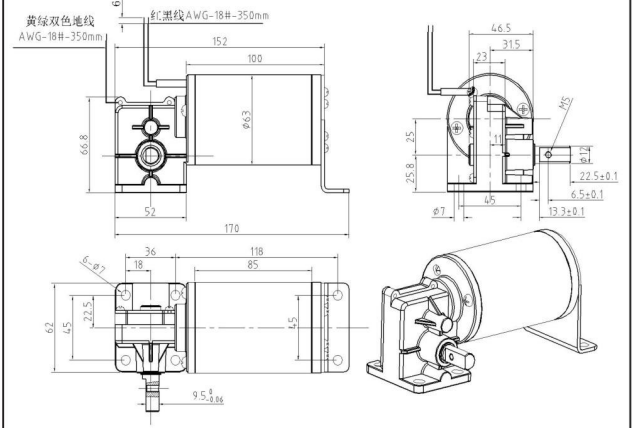
产品型号 Products Type	额定电压 Voltage	额定功率 Power	空载No Load		负载Load			减速比 Gear ratio	钢壳长度 Motor length
			转速 Speed	电流 Current	转速 Speed	电流 Current	力矩 Torque		
	VDC	W	RPM	A	RPM	A	N. M		mm
JCF63R-2445-180	24	45	180 ± 5	≤ 1.2	150 ± 5	≤ 4.0	≥ 3.5	1:20	85
JCF63R-22080-30	220	80	30 ± 3	≤ 0.2	25 ± 2	≤ 0.5	≥ 7.0	1:60	85
JCF63R-2480-50	24	80	50 ± 5	≤ 1.2	45 ± 5	≤ 4.5	≥ 6.0	1:60	85
JCF63R-2480-100	24	80	100	≤ 1.8	80 ± 5	≤ 7.5	≥ 8	1:60	85
JCF63R-1260-60	12	60	60 ± 5	≤ 1.5	50 ± 5	≤ 6.0	≥ 8	1:60	85
JCF63R-3680-40	36	80	40 ± 5	≤ 1.0	32 ± 3	≤ 4.0	≥ 6	1:60	85
JCF63R-2480-250	24	80	250	≤ 1.8	200 ± 20	≤ 6.0	≥ 5	1:15	85
JCF63R-2480-320	24	80	320	≤ 1.8	250 ± 25	≤ 6.0	≥ 6	1:15	85
JCF63R-22080-400	220	80	400	≤ 0.4	320 ± 40	≤ 0.8	≥ 6	1:15	85
JCF63R-1280-160	12	80	160	≤ 1.6	140 ± 10	≤ 7.0	≥ 3	1:24	85
JCF63R-2480-160	24	80	160	≤ 1.2	140 ± 10	≤ 5.0	≥ 4	1:24	85
JCF63R-2415-15	24	15	15 ± 2	≤ 0.5	12 ± 2	≤ 2.0	≥ 4	1:75	85
JCF63R-2480-30	24	80	33 ± 3	≤ 0.8	25 ± 3	≤ 4.8	≥ 8	1:68	85
JCF63R-2410-6	24	10	6 ± 1	≤ 0.3	4 ± 1	≤ 1.5	≥ 2	1:75	85
JCF63R-4880-30	48	80	33 ± 3	≤ 0.5	25 ± 3	≤ 3.0	≥ 8	1:68	85
JCF63R-11080-60	110	80	60 ± 6	≤ 0.3	52 ± 5	≤ 1.0	≥ 8	1:60	85
备注: Remarks	以上为我公司生产的常规电机型号参数, 另可根据客户提供的电压、功率、转速、力矩、电机安装尺寸、轴伸尺寸等参数进行设计制作。Above are our model parameter for the wire feed for your reference, and we can design and make following to your voltage, power, speed, torque, install dimension and shaft outspeed dimension etc.								

2.3- JC63W电机产品系列: JCF63W motor series

产品代表图:D63W-Model



产品外形图:D63W-Model



电机选型参数:Motor characteristic

产品型号 Products Type	额定电压 Voltage	额定功率 Power	空载No Load		负载Load			减速比 Gear ratio	钢壳长度 Motor length
			转速 Speed	电流 Current	转速 Speed	电流 Current	力矩 Torque		
	VDC	W	RPM	A	RPM	A	N. M	mm	
JCF63W-22080-48	220	80	48 ± 5	≤0.2	38 ± 5	≤0.6	≥6	1:60	85
JCF63W-2480-48	24	80	48 ± 5	≤1.2	38 ± 5	≤5.0	≥7	1:60	85

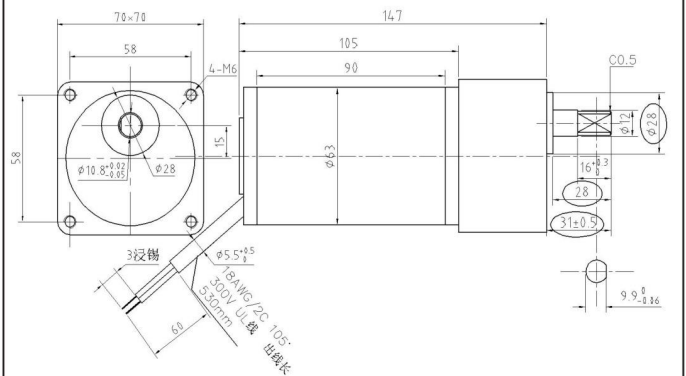
此产品适用于家用电器，如电动晾衣架，电动窗帘，鞋底清洁机，机械设备等。特点：噪音小，力矩大，安装方便。输出轴尺寸接受定制。

2.4- JC63SF电机产品系列: JCF63SF motor series

产品代表图:D63四方 (1比12) -Model



产品外形图:D63四方 (1比12) -Model



电机选型参数:Motor characteristic

产品型号 Products Type	额定电压 Voltage	额定功率 Power	空载No Load		负载Load			减速比 Gear ratio	钢壳长度 Motor length
			转速 Speed	电流 Current	转速 Speed	电流 Current	力矩 Torque		
	VDC	W	RPM	A	RPM	A	N. M	mm	
JCF63SF-2480-250	24	80	250-300	≤1.2	200-300	≤5.0	≥4	1:12.5	90

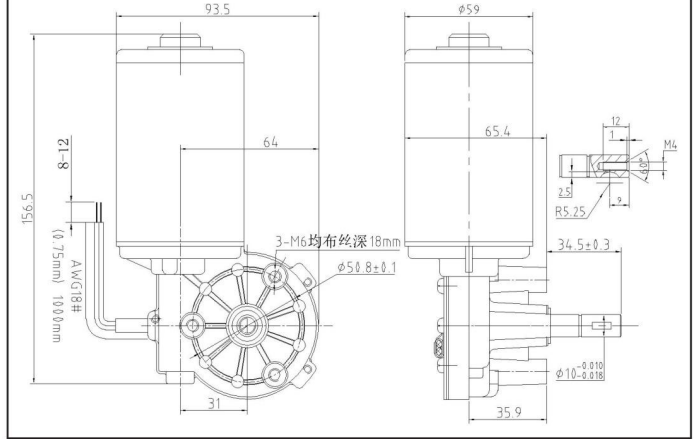
此产品适用于家用电器，如电动晾衣架，电动窗帘，鞋底清洁机，机械设备等。特点：噪音小，力矩大，安装方便。输出轴尺寸接受定制。

3.1-JCF59电机产品系列: JCF59 motor series

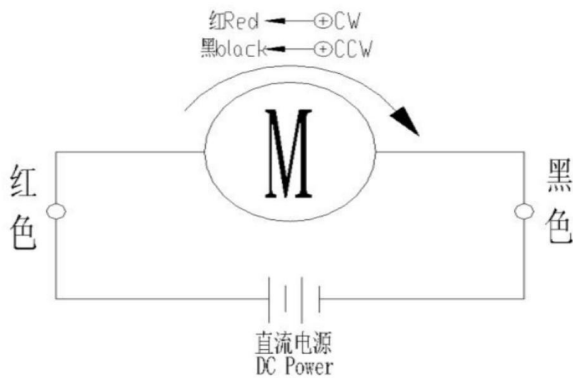
产品代表图:D59R-Model



产品外形图:D59R-Model



电机接线图: Wire connector



电机曲线图 (JCF59-2430-65R) : Test

No	V(V)	I(A)	F _i (W)	M(N.m)	n(rpm)	F _o (W)	EFF(%)
1	23.78	0.78	18.6	0.16	84	1.07	5.77
2	23.77	0.85	20.1	0.33	84	2.21	11.00
3	23.77	0.97	23.0	0.56	83	3.69	16.06
4	23.75	1.06	25.2	0.92	83	6.07	24.09
5	23.72	1.26	29.9	1.28	82	8.31	27.80
6	23.69	1.45	34.3	1.74	81	11.12	32.41
7	23.66	1.78	42.1	2.34	80	14.70	34.92
8	23.63	2.29	54.1	3.03	59	18.72	34.61
9	23.57	2.77	65.3	3.75	57	22.38	34.28
10	23.56	3.07	72.3	4.61	56	27.04	37.39
11	23.47	3.66	85.9	5.50	54	31.10	36.21
12	23.42	4.27	100.0	6.42	52	34.96	34.96
13	23.35	4.83	112.8	7.47	51	39.90	35.37
14	23.28	5.58	129.9	8.46	49	43.41	33.42
15	23.19	6.37	147.7	9.55	47	47.00	31.82
16	23.09	7.37	170.2	10.93	46	52.65	30.26
17	23.04	8.05	185.5	12.05	43	54.26	29.25
18	22.94	8.91	204.3	13.33	40	55.84	27.33
19	22.84	9.78	223.4	14.61	37	56.61	25.34
20	22.69	11.40	258.8	16.00	35	58.64	22.66

电机选型参数: Motor characteristic

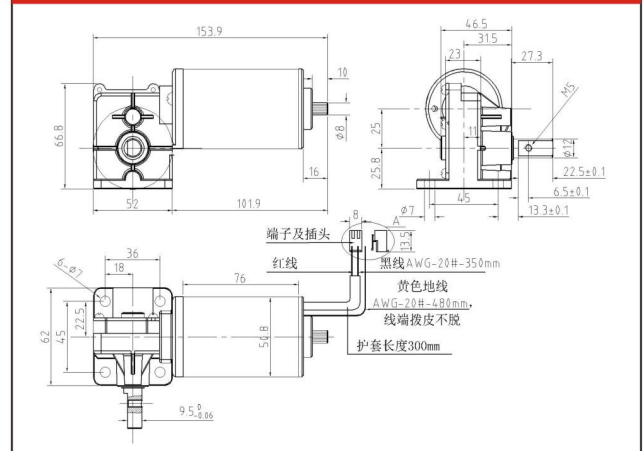
产品型号 Products Type	额定电压 Voltage	额定功率 Power	空载No Load		负载Load			减速比 Gear ratio	钢壳长度 Motor length
			转速 Speed	电流 Current	转速 Speed	电流 Current	力矩 Torque		
	VDC	W	RPM	A	RPM	A	N. M		mm
JCF59R-2430-15	24	30	15 \pm 2	\leq 0.8	12 \pm 2			1:70	80
JCF59R-2430-40	24	30	40 \pm 4	\leq 1.2	32 \pm 3	\leq 5.5	\geq 4.0	1:56	80
JCF59R-2410-3	24	10	3	\leq 0.2	2	\leq 0.8	\geq 1.5	1:70	80
JCF59R-2430-140	24	30	140 \pm 8	\leq 1.2	110 \pm 8	\leq 6.5	\geq 4.0	1:28	80
备注: Remarks	以上为我公司生产的常规电机型号参数, 另可根据客户提供的电压、功率、转速、力矩、电机安装尺寸、轴伸尺寸等参数进行设计制作。Above are our model parameter for the wire feed for your reference, and we can design and make following to your voltage, power, speed, torque, install dimension and shaft outspeed dimension etc.								

4.1-JC52W电机产品系列: JCF52W motor series

产品代表图:D52-22040-48电机-Model



产品外形图:D52-22040-48电机-Model



电机选型参数:Motor characteristic

产品型号 Products Type	额定电压 Voltage VDC	额定功率 Power W	空载No Load		负载Load			减速比 Gear ratio	钢壳长度 Motor length mm
			转速 Speed RPM	电流 Current A	转速 Speed RPM	电流 Current A	力矩 Torque N. M		
JCF52W-22040-48	220	40	48 ± 5	≤0.2	38 ± 5	≤0.5	≥5	1:62	76
JCF52W-2440-48	24	40	48 ± 5	≤0.8	38 ± 5	≤4.0	≥5	1:62	76

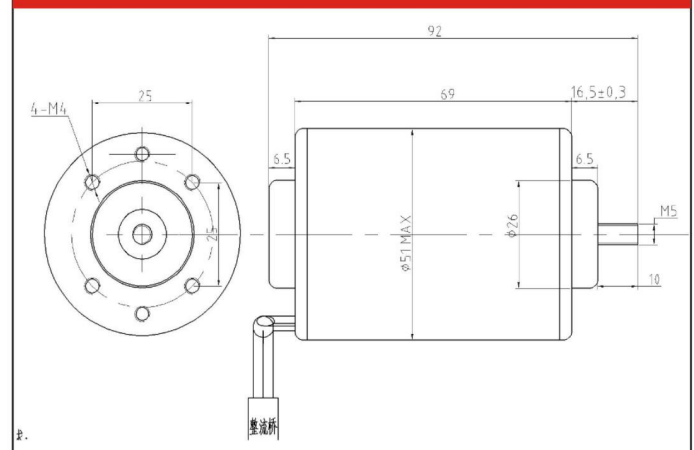
此产品适用于家用电器，如电动晾衣架，电动窗帘，鞋底清洁机，机械设备等。特点：体积小，力矩大，安装方便。输出轴尺寸接受定制。

4.2-JCF52电机产品系列: JCF52 motor series

产品代表图:JCF52 motor series



产品外形图:JCF52 motor series



电机选型参数:Motor characteristic

产品型号 Products Type	额定电压 Voltage VDC	额定功率 Power W	空载No Load		负载Load			减速比 Gear ratio	钢壳长度 Motor length mm
			转速 Speed RPM	电流 Current A	转速 Speed RPM	电流 Current A	力矩 Torque N. M		
JCF52-22040-3100	220	40	3100	≤0.1	2600	≤0.3	≥0.1	64	

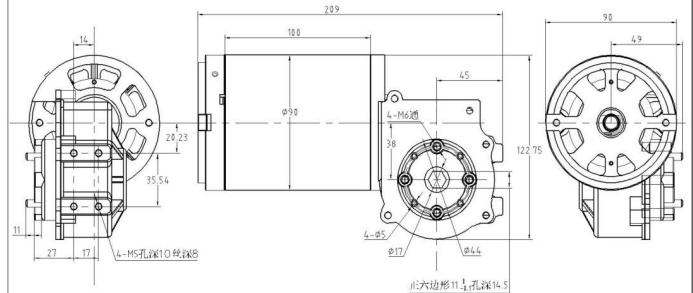
此产品适用于家用电器，如电动晾衣架，电动窗帘，鞋底清洁机，机械设备等。特点：噪音小，力矩大，安装方便。输出轴尺寸接受定制。

5.1-JC90Z电机产品系列: JCF90 motor series

产品代表图:D90内六角-Model



产品外形图:D90内六角-Model

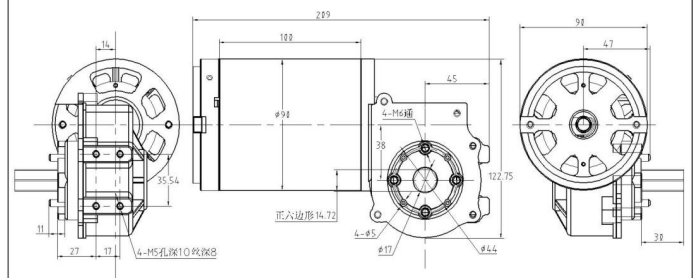


5.2-JC90ZC电机产品系列: JCF90ZC motor series

产品代表图:D90外六角-Model



产品外形图:D90外六角-Model



电机选型参数:Motor characteristic

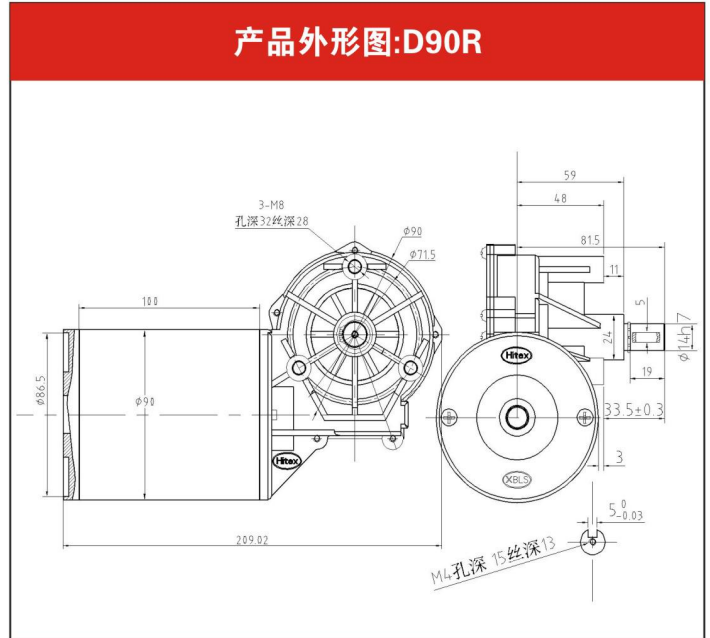
产品型号 Products Type	额定电压 Voltage	额定功率 Power	空载No Load		负载Load			减速比 Gear ratio	钢壳长度 Motor length
			转速 Speed	电流 Current	转速 Speed	电流 Current	力矩 Torque		
	VDC	W	RPM	A	RPM	A	N. M		mm
JCF90Z-220300-85	220	300	85 ± 8	≤ 0.2	68 ± 6	≤ 1.0	≥ 25	1:45	100
JCF90Z-24200-70	24	200	70 ± 7	≤ 1.6	60 ± 5	≤ 8.0	≥ 15	1:45	100
JCF90Z-24200-60	24	200	60 ± 6	≤ 1.6	50 ± 5	≤ 8.0	≥ 15	1:66	100
JCF90Z-24300-70	24	300	70 ± 7	≤ 2.0	60 ± 6	≤ 8.0	≥ 20	1:66	100
JC90Z-220400-110	220	400	110 ± 8	≤ 0.4	80 ± 5	≤ 1.3	≥ 30	1:45	100
JCF90Z-220200-45	220	200	45 ± 5	≤ 1.0	35 ± 5	≤ 1.3	≥ 30	1:66	100
备注: Remarks	以上为我公司生产的常规送丝电机型号参数, 另可根据客户提供的电压、功率、转速、力矩、电机安装尺寸、轴伸尺寸等参数进行设计制作。Above are our model parameter for the wire feed for your reference, and we can design and make following to your voltage, power, speed, torque, install dimension and shaft outspeed dimension etc. 此产品适用于家用电器, 如榨油机, 慢榨机, 传动设备等。特点: 噪音小, 力矩大。输出轴尺寸接受定制。								

5.3-JC90R电机产品系列: JCF90R motor series

产品代表图:D90R



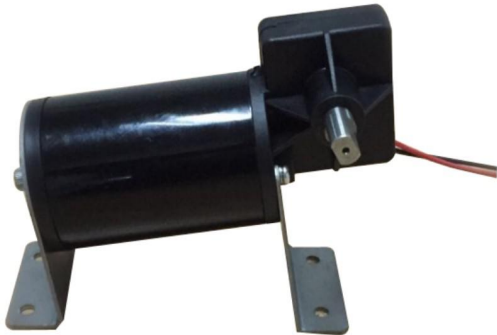
产品外形图:D90R



电机选型参数:Motor characteristic

产品型号 Products Type	额定电压 Voltage	额定功率 Power	空载No Load		负载Load			减速比 Gear ratio	钢壳长度 Motor length
			转速 Speed	电流 Current	转速 Speed	电流 Current	力矩 Torque		
			VDC	W	RPM	A	RPM		A
JCF90R-220300-70	220	300	70 ± 8	≤ 0.4	60 ± 6	≤ 1.5	≥ 25	1:61	100
JCF90R-24200-70	24	200	70 ± 7	≤ 1.6	60 ± 5	≤ 8.0	≥ 15	1:61	100
JCF90R-24180-55	24	180	55 ± 5	≤ 1.6	45 ± 5	≤ 8.0	≥ 20	1:77	100
JCF90R-24120-55	24	120	55 ± 5	≤ 1.5	45 ± 5	≤ 8.0	≥ 15	1:77	100
JCF90R-220200-45	220	200	45 ± 5	≤ 1.0	35 ± 5	≤ 1.3	≥ 30	1:77	100
备注: Remarks	以上为我公司生产的常规送丝电机型号参数, 另可根据客户提供的电压、功率、转速、力矩、电机安装尺寸、轴伸尺寸等参数进行设计制作。Above are our model parameter for the wire feed for your reference, and we can design and make following to your voltage, power, speed, torque, install dimension and shaft outspeed dimension etc. 此产品适用于家用电器, 如榨油机, 慢榨机, 传动设备等。特点: 噪音小, 力矩大。输出轴尺寸接受定制。								

6.0-JC特种电机产品系列：



型号：JCF63Q
电压：DC220V
功率：80W
转速：55RPM
减速比：1比60
额定力矩：8N.M
齿轮材料：合金铜
使用场合：家用鞋底
清洁机，电动晾衣架



型号：JCF52Q
电压：DC220V
功率：40W
转速：55RPM
减速比：1比62
额定力矩：5N.M
齿轮材料：合金铜
使用场合：家用鞋底
清洁机，电动晾衣架



型号：JCF59T
电压：DC12V
功率：40W
转速：15RPM
减速比：1比240
额定力矩：大于13N.M
齿轮材料：合金铜
使用场合：SUV汽车电
动踏板。

JCF76L-108



JCF76-85



JCF76L-97



JCF63L-85



JCF63L-66



JCF63L-85



JCF76LR-85



JCF63L-85-200

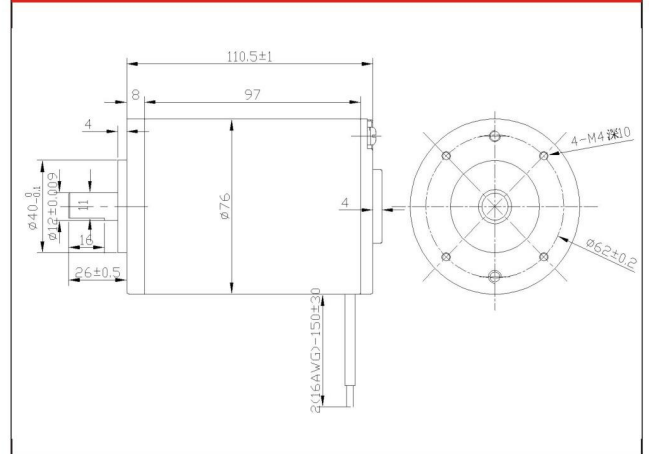


7.0-JCF76四极电机产品系列: JCF76 motor series

产品代表图:D76四极-Model



产品外形图:D76四极-Model



电机选型参数:Motor characteristic

产品型号 Products Type	额定电压 Voltage	额定功率 Power	空载No Load		负载Load			堵转力矩 N. M	钢壳长度 Motor length
			转速 Speed	电流 Current	转速 Speed	电流 Current	力矩 Torque		
			VDC	W	RPM	A	RPM		A
JCF76S-4892-2200	48	92	2200	≤0.8	1800	≤4	≥0.5	≥2.8	97

此产品适用于机械设备，如扫地机，油泵，气泵，水泵等。特点：噪音小，力矩大。输出轴尺寸接受定制。

7.1-JCF普通电机产品系列：motor series

JCF76-67



JCF76-S85



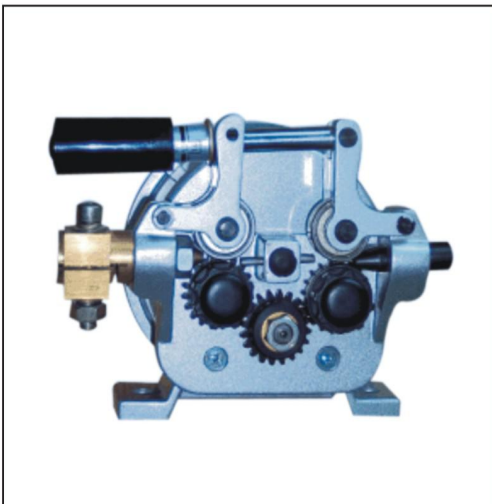
JCF90-100



JCF63-85-01



8.1-印刷电机产品图 Print motor



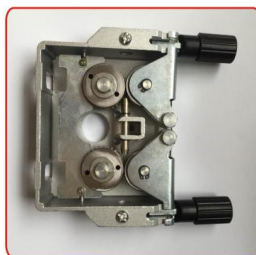
参数characteristic:
 电机电压Voltage:
 DC18.3V DC24V
 电机功率Power:
 60W 80W
 转速Speed:
 130RPM 150RPM
 180RPM 210RPM
 适用焊丝直径Wire
 diameter: (mm)
 0.8,0.9,1.0,1.2,1.6

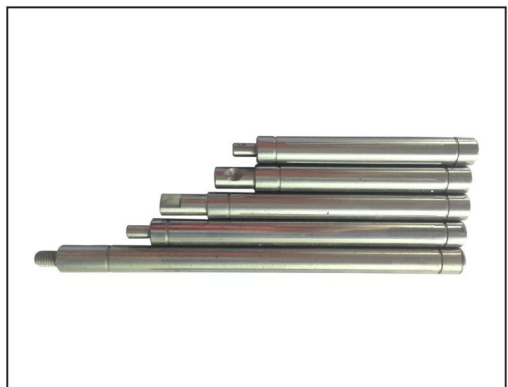
9.1-分体机构产品图wire feed system:



参数characteristic:
 电机电压Voltage:
 DC18.3V DC24V
 电机功率Power:
 60W 80W
 转速Speed:
 130RPM 150RPM
 180RPM 210RPM
 适用焊丝直径Wire
 diameter: (mm)
 0.8,0.9,1.0,1.2,1.6

10.1-送丝机配件: WIRE FEED







GUANGZHOU HAOQING MOTOR CO.,LTD

E-mail: sherry@gzhqmotor.com

Website: <http://www.gzhqmotor.com>